

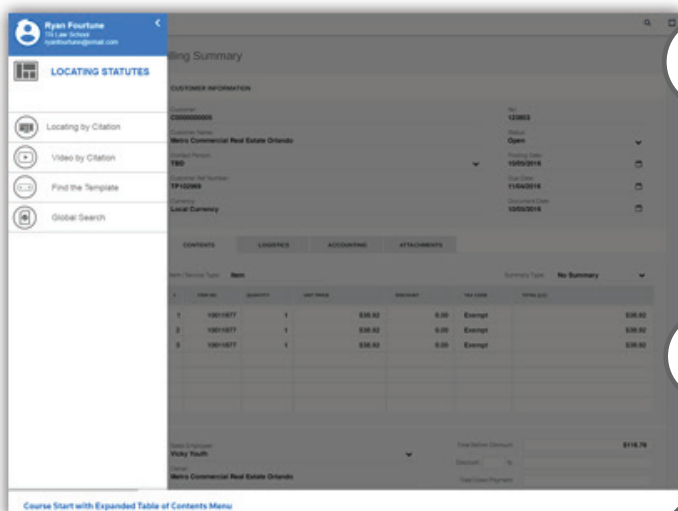


Riptide Elements® clients use our technology product line to deliver a more practical and sustainable approach to business and mission critical software training.

Waypoints™ provides an in-line software training experience so that users can learn by doing. You can deliver training that matches the latest version of the software, gain powerful insights, and prove the competency level of each trainee.

Waypoints helps solve the three most common problems with software training:

- 1) Ineffective and frustrating training methods such as side-by-side or video instruction
- 2) Training content and media that is almost always out of date with the most current version of the software itself
- 3) Getting clear data and analytics to evaluate each trainee



Features

Learn By Doing

Beginner-to-Expert: A training overlay provides guided workflows with multiple levels of complexity from daily use to business or mission critical functions.

Waypoints Guide: Learning new software workflows can be complex and users can get lost in the process. The Waypoints Guide feature allows users to always see where they are in their progress and go back if necessary.

Competency Based Assessments

Waypoints listens for the correct use of the software during the assessment, tracking the the amount of steps and the time it takes to complete. Users prove they know the software by showing they can “produce the correct outcome.”

Interactive Multimedia Instruction (IMI)

Any type of instructional media including videos, quizzes, games, and more can be served within the Waypoints training experience to reinforce key concepts.

Real-Time Contextual Help

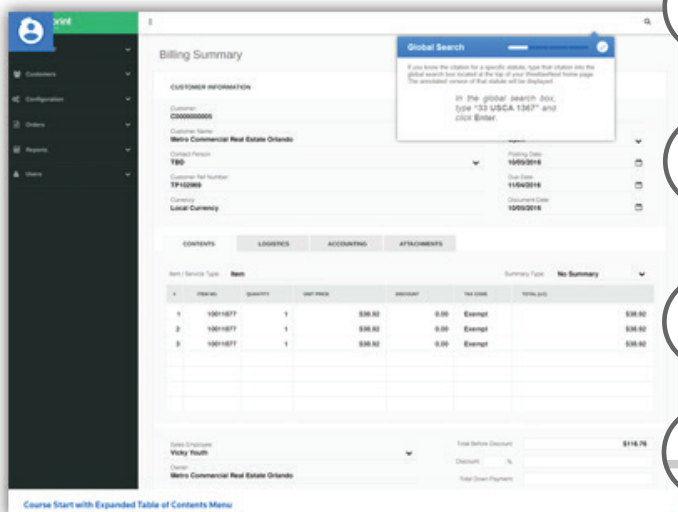
Waypoints can be configured to offer contextual help right at the point of need. In-line help can guide the user to finish a process if they get stuck.

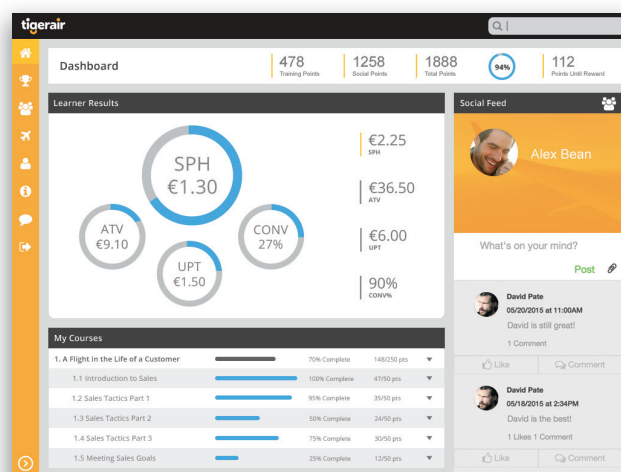
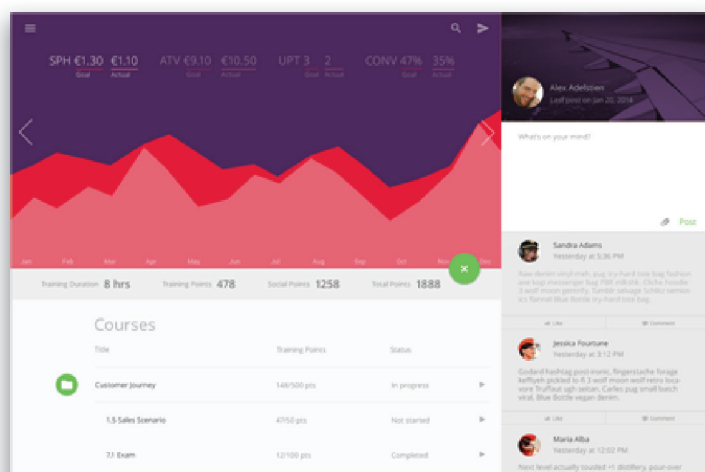
Authoring

Instructional Designers with limited technology training can author workflows.

Versioning

Waypoints versioning keeps the training always up to date. If the software release needs to roll-back to a previous version, the Waypoints training can roll-back too.





Admin & Learner Portals

- All authentication strategies are available to implement
- Administrators can create classes and assign content to users
- Administrators can track behavior in training and competencies
- Learners can track overall progress, see assignments, classes, and courses available for them to take

Adaptive Learning

Create rules based on xAPI activity data to adapt Waypoints training to the individual's needs, intervene at point of learner need or automate tutoring rules.

Ad Hoc Querying

Write direct LRS queries to inform adaptive rule-making

xAPI Stream Processing

Dynamic rules applied to xAPI activity streams

Reporting and Analytics

Tell a meaningful story and provide actionable dashboard reports with your training data.

xAPI/LRS

Waypoints is natively enabled to report xAPI activity streams to a Learning Record Store (LRS). Riptide is part of the workgroup that created the Experience API (xAPI) and Learning Record Store (LRS) specification. With xAPI's powerful Activity and Verb structure you can derive causality and competencies from the data. You can even allow other enterprise analytics services to subscribe to xAPI data streams

Data Visualization

Enable or feed actionable data views; software/training usage and performance statistics, timeline and steps to complete reports of assessments, and more

SCORM/AICC Support

Riptide Elements products are proven to be 100% backwards compatible and are currently reporting AICC/SCORM for multiple client LMS's

Minimum System Requirements:

Browsers:

- IE11 and Above
- Firefox: Latest version
- Safari: Version 9 and above
- Google Chrome: Latest version

* Chrome and Firefox have auto-updaters.
Most machines will be on the current version of these browsers.

Waypoints is part of the Riptide Elements® learning technology product line, recognized in 2015 & 2016 by Brandon Hall Group as a “Best Advance in Learning Management Technology.”